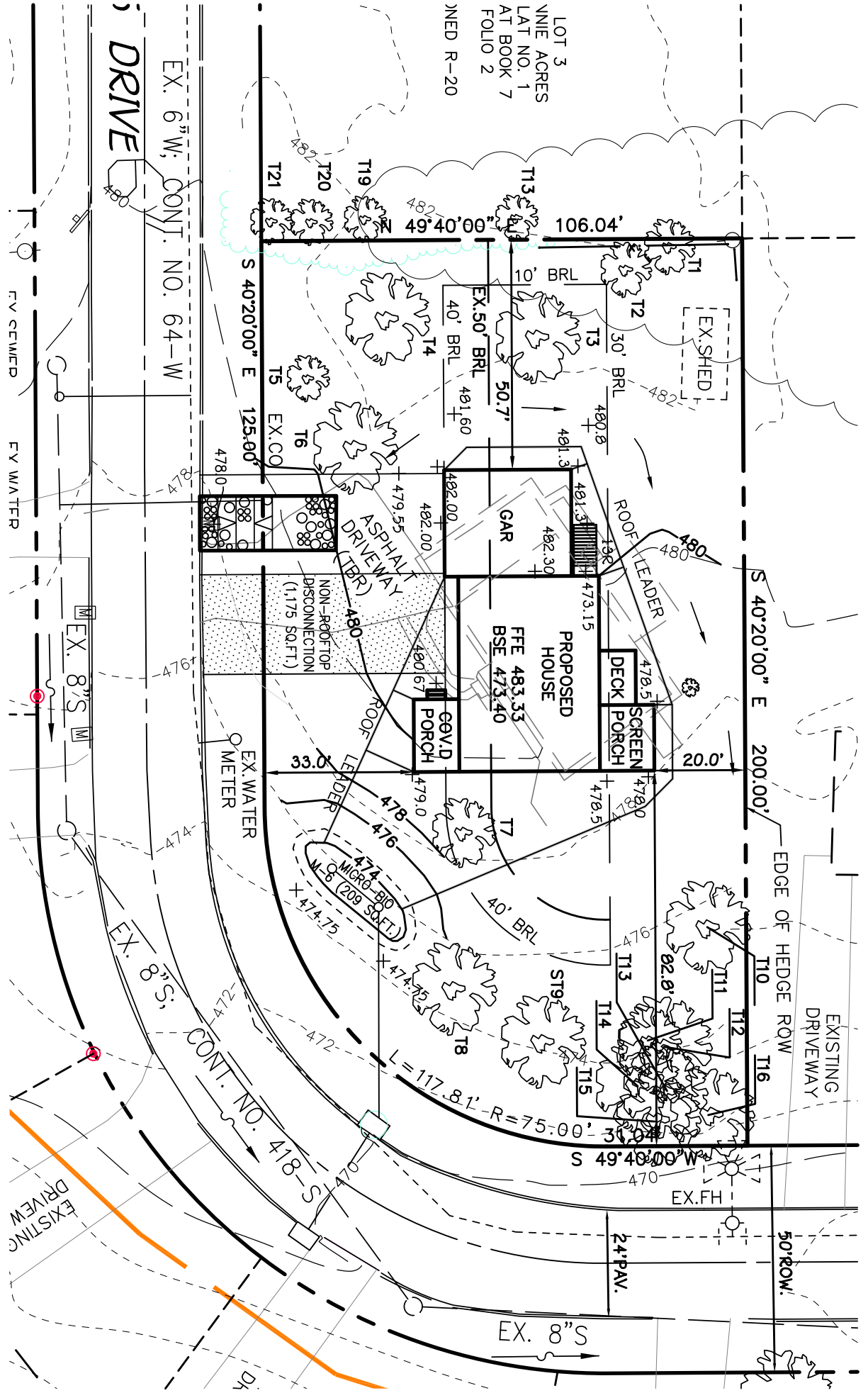


LOT 3
NINE ACRES
LAT NO. 1
AT BOOK 7
FOLIO 2
UNED R-20



EX. 6" W. CONT. NO. 64-W
DRIVE

EX. 8" S
CONT. NO. 418-S

EXISTING DRIVEWAY

EXISTING DRIVEWAY
EDGE OF HEDGE ROW

FV SEWER
FY WATER

EX. 8" S
EX. WATER METER

EX. 8" S

24' PAV.

50' ROW