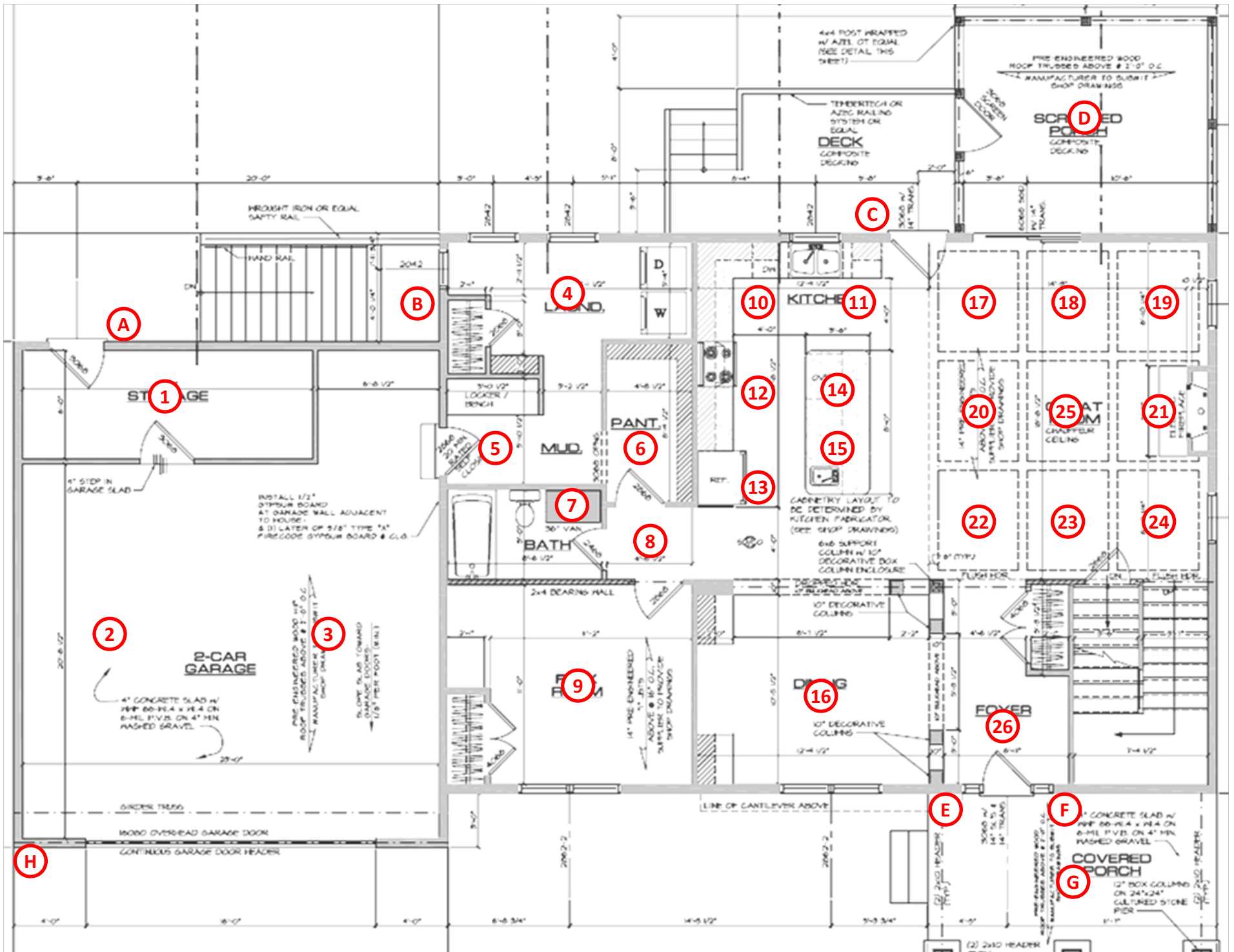
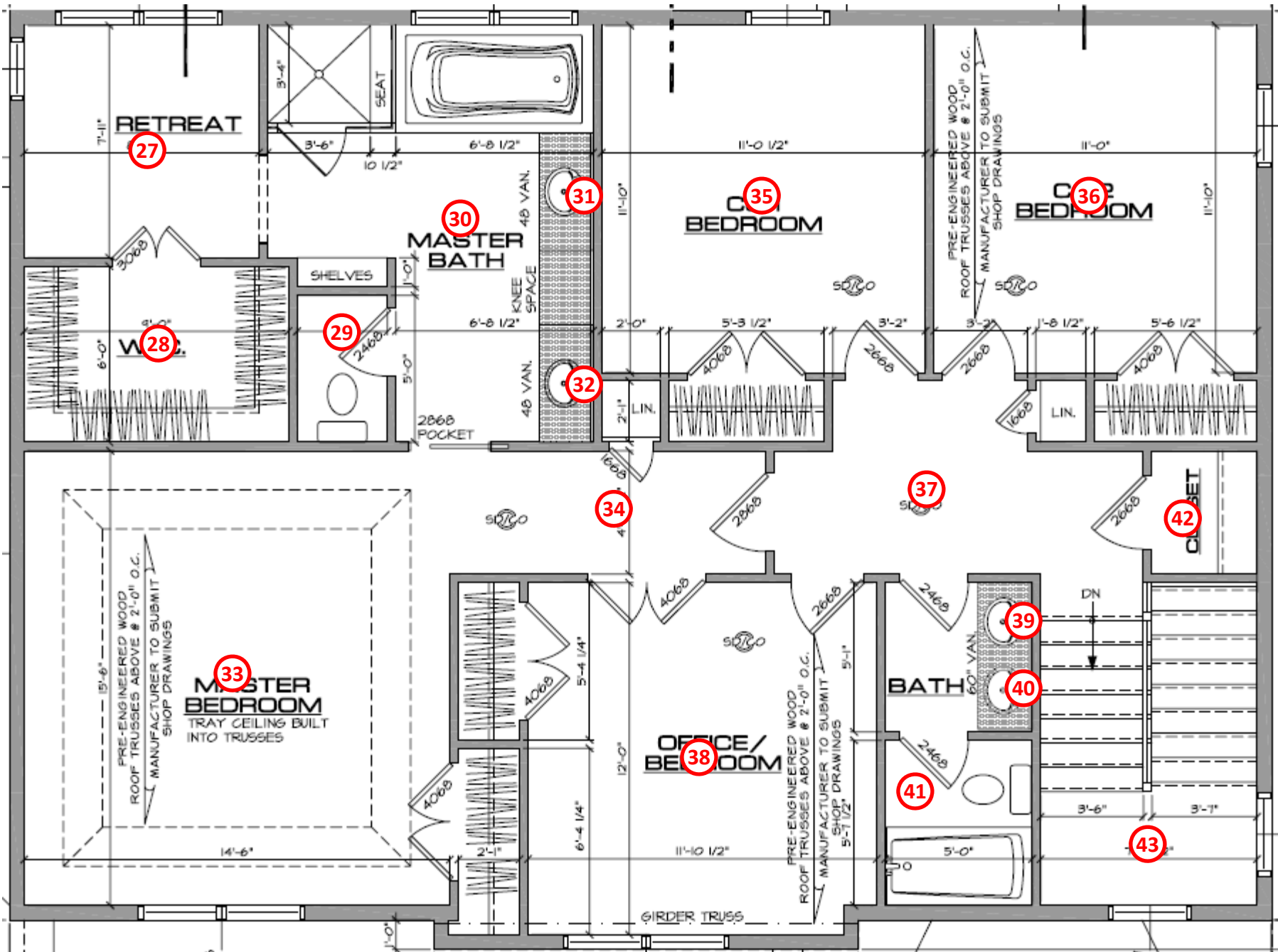


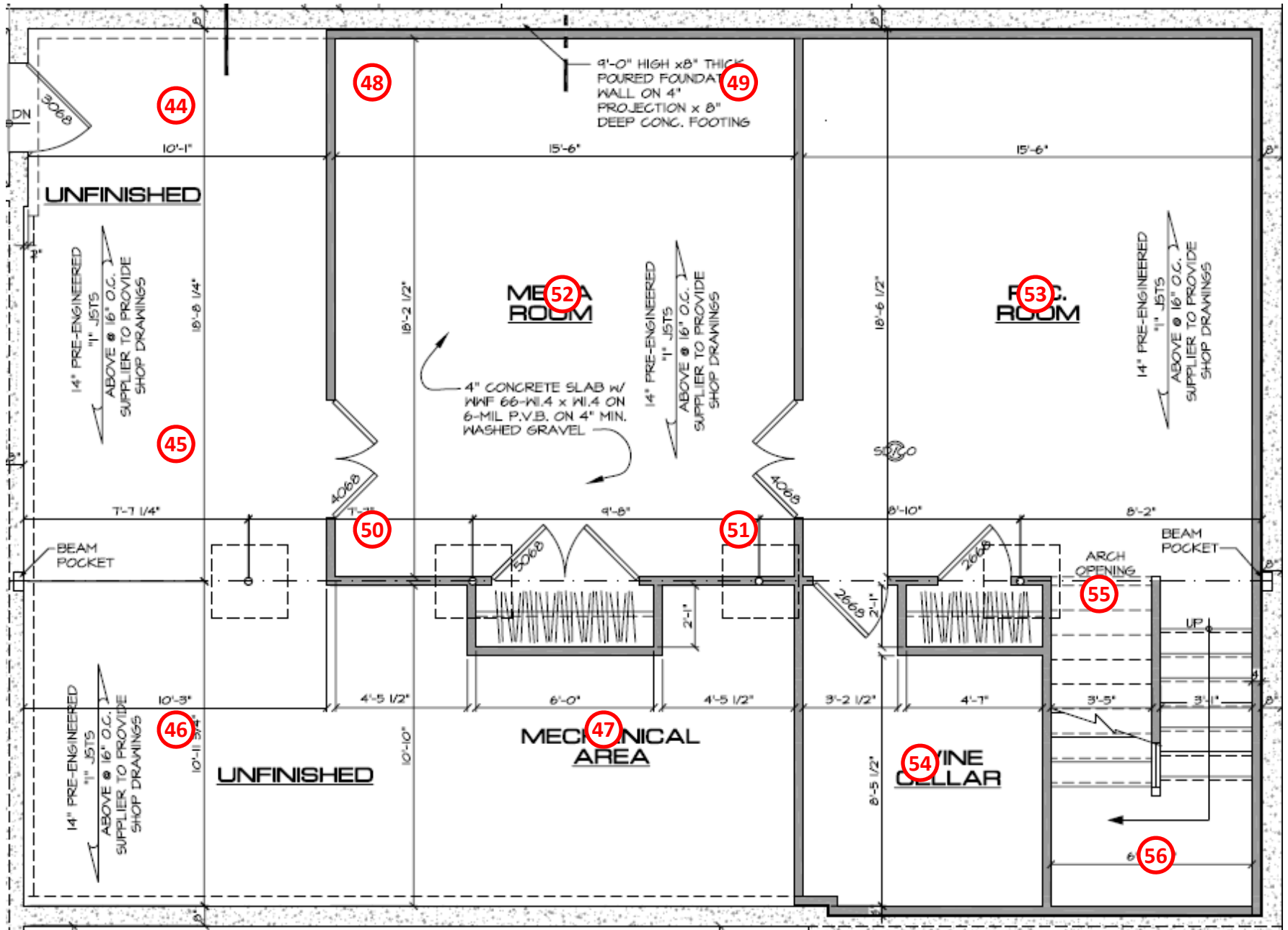
5148 Bonnie Acres Drive -LIGHTING PLAN

SEE ATTACHED DIAGRAMS FOR APPROXIMATE LOCATION

| LOC# | FIRST FLOOR | TYPE | QTY | LOCATION | NOTES |
|-------------|---------------------|--------------------------|------------|---|--------------|
| 1 | GARAGE STORAGE | Flush Mount | 1 | center | |
| 2-3 | GARAGE | Flush Mount | 2 | centered above parking | |
| 4 | LAUNDRY | Flush Mount | 1 | center | |
| 5 | MUD ROOM | Flush Mount | 1 | centered in garage entry/locker area | |
| 6 | PANTRY | Flush Mount | 1 | center | |
| 7 | BATHROOM | Vanity Light | 1 | centered over mirror | |
| 8 | BACK HALLWAY | Flush Mount | 1 | center | |
| 9 | FLEX ROOM | Ceiling Fan/Light Combo | 1 | center | |
| 10-13 | KITCHEN | Can Lights | 4 | over work areas | on dimmer |
| 14-15 | KITCHEN | Chandeliers | 2 | over island | |
| 16 | DINING ROOM | Chandelier | 1 | center of non-cabinet space | on dimmer |
| 17-24 | GREAT ROOM | Can Lights | 8 | centers of coffers | |
| 25 | GREAT ROOM | Ceiling Fan/Light Combo | 1 | center | with downrod |
| 26 | FOYER | Chandelier | 1 | center | |
| | | | | | |
| LOC# | SECOND FLOOR | TYPE | QTY | LOCATION | NOTES |
| 27 | RETREAT | Flush Mount | 1 | center | |
| 28 | WALK-IN CLOSET | Flush Mount | 1 | center | |
| 29 | WATER CLOSET | Flush Mount | 1 | center | |
| 30 | MASTER BATH | Flush Mount | 1 | center | |
| 31-32 | MASTER BATH | Vanity Lights | 2 | centered over mirrors | |
| 33 | MASTER BEDROOM | Ceiling Fan/Light Combo | 1 | center | with downrod |
| 34 | MASTER BEDROOM | Flush Mount | 1 | centered in entry | |
| 35 | CJ1 BEDROOM | Ceiling Fan/Light Combo | 1 | center | |
| 36 | CJ2 BEDROOM | Ceiling Fan/Light Combo | 1 | center | |
| 37 | HALLWAY | Flush Mount | 1 | center | |
| 38 | OFFICE | Ceiling Fan/Light Combo | 1 | center | |
| 39-40 | BOYS BATHROOM | Vanity Light | 2 | centered over mirrors | |
| 41 | BOYS BATHROOM | Flush Mount | 1 | center | |
| 42 | HALL CLOSET | Flush Mount | 1 | center | |
| 43 | STAIRCASE | Flush Mount | 1 | centered on landing | |
| | | | | | |
| LOC# | BASEMENT | TYPE | QTY | LOCATION | NOTES |
| 44-47 | UNFINISHED AREA | Simple Screw-In Fixtures | 4 | 1 @ entry door, other 3 centered throughout | |
| 48-51 | MEDIA ROOM | Can Lights | 4 | one in each corner, on dimmers | |
| 52 | MEDIA ROOM | Ceiling Fan/Light Combo | 1 | center | |
| 53 | REC ROOM | Ceiling Fan/Light Combo | 1 | center | |
| 54 | WINE CELLAR | Flush Mount | 1 | center | |
| 55-56 | BASEMENT STAIRS | Flush Mount | 2 | top of staircase, centered on landing | |
| | | | | | |
| LOC# | EXTERIOR | TYPE | QTY | LOCATION | NOTES |
| A | BACK OF GARAGE | Exterior wall light | 1 | outside door | |
| B | AREAWAY | Exterior wall light | 1 | outside door | |
| C | DECK | Exterior wall light | 1 | outside door | |
| D | SCREENED PORCH | Ceiling Fan/Light Combo | 1 | center | |
| E-F | FRONT PORCH | Entry Lights | 2 | each side of entry door | |
| G | FRONT PORCH | Hanging Lantern | 1 | center | |
| H | GARAGE | Motion Sensor | 1 | top left of garage door | |







44

48

49

45

50

51

46

47

53

54

55

56

UNFINISHED

MECHA ROOM

MEC. ROOM

MECHANICAL AREA

WINE CELLAR

9'-0" HIGH x 8" THICK
POURED FOUNDATION
WALL ON 4"
PROJECTION x 8"
DEEP CONC. FOOTING

4" CONCRETE SLAB w/
HWF 66-WI.4 x WI.4 ON
6-MIL P.V.B. ON 4" MIN.
WASHED GRAVEL

14" PRE-ENGINEERED
1" JSTS
ABOVE @ 16" O.C.
SUPPLIER TO PROVIDE
SHOP DRAWINGS

14" PRE-ENGINEERED
1" JSTS
ABOVE @ 16" O.C.
SUPPLIER TO PROVIDE
SHOP DRAWINGS

14" PRE-ENGINEERED
1" JSTS
ABOVE @ 16" O.C.
SUPPLIER TO PROVIDE
SHOP DRAWINGS

14" PRE-ENGINEERED
1" JSTS
ABOVE @ 16" O.C.
SUPPLIER TO PROVIDE
SHOP DRAWINGS

UNFINISHED

ARCH OPENING

BEAM POCKET

UP

DN

BEAM POCKET

10'-1"

15'-6"

15'-6"

18'-8 1/4"

18'-2 1/2"

18'-6 1/2"

T-1 1/4"

9'-8"

8'-10"

8'-2"

10'-3"

4'-5 1/2"

6'-0"

4'-5 1/2"

3'-2 1/2"

4'-1"

3'-5"

3'-1"

10'-11 3/4"

10'-10"

8'-5 1/2"

6'

8"

8"

8"

8"

8"

8"

8"

8"