

OPTION-7A

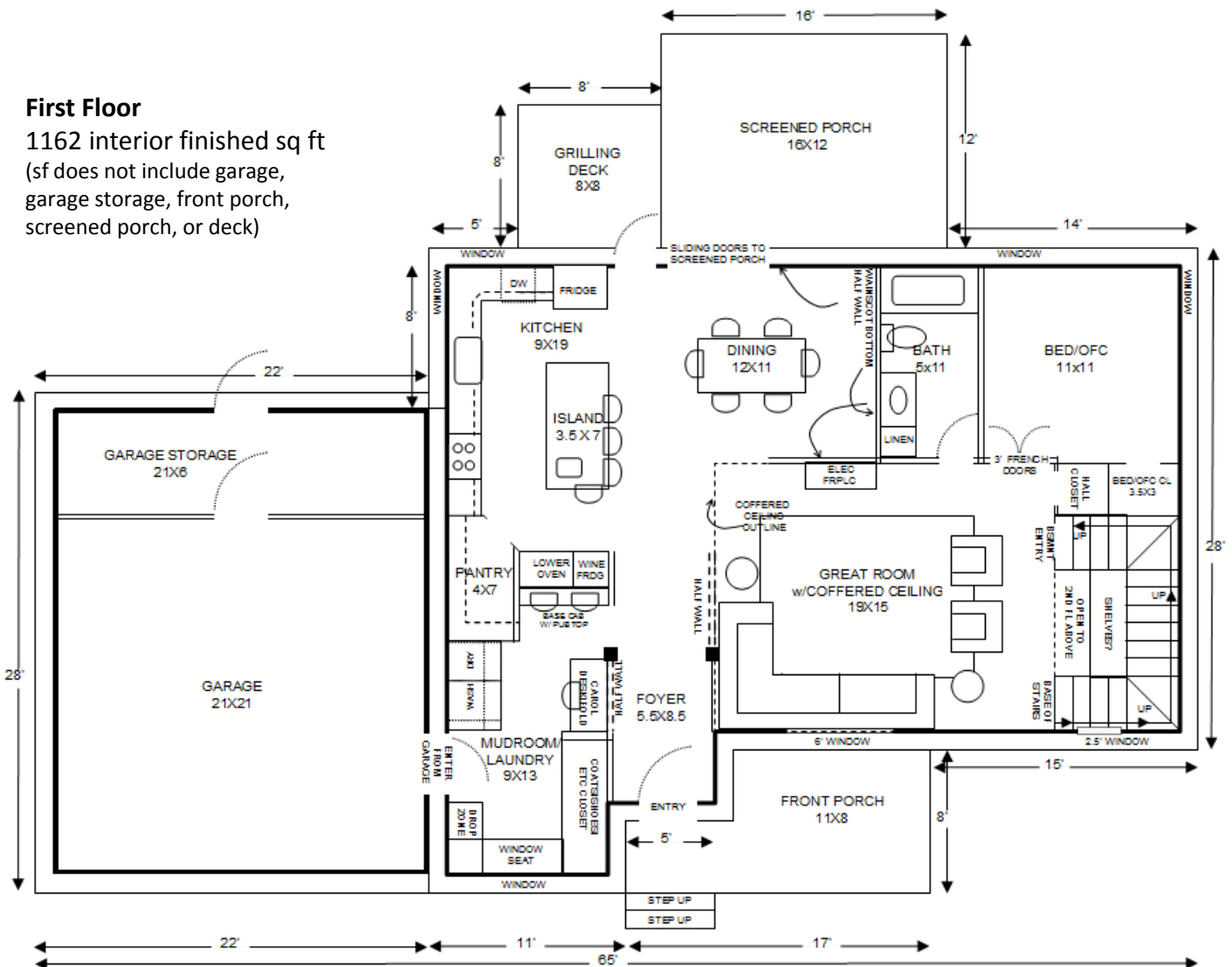
Front Elevation

(Note: this elevation was created from a previous version of the floor plan. Entry/porch will move on new elevation- will revise and send.)



First Floor

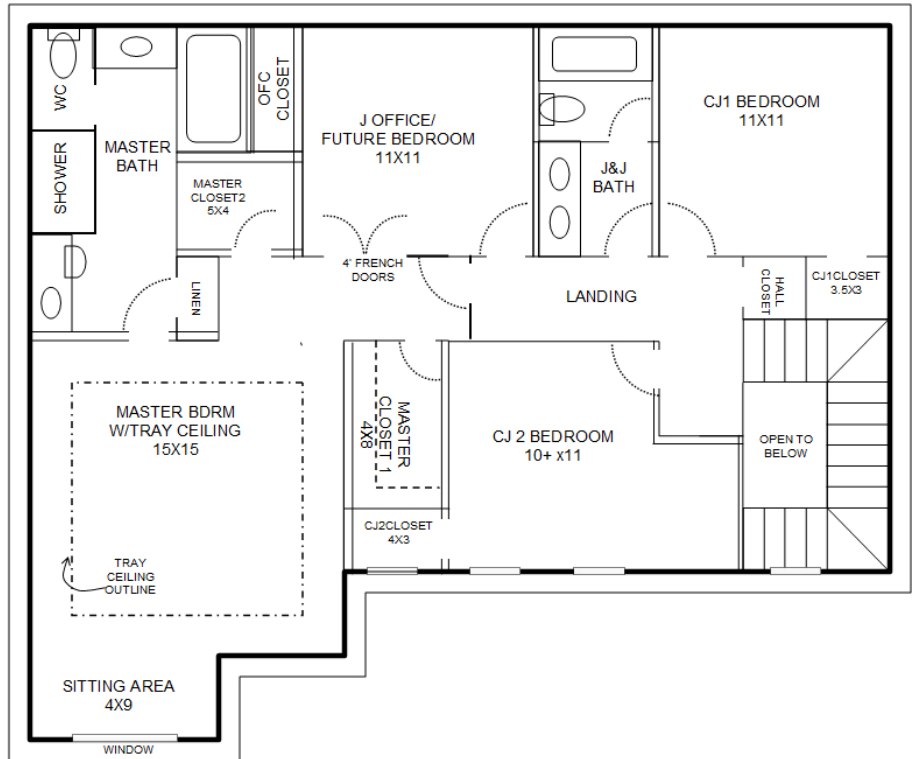
1162 interior finished sq ft
(sf does not include garage, garage storage, front porch, screened porch, or deck)



5148 Bonnie Acres Drive, Ellicott City, MD 21042

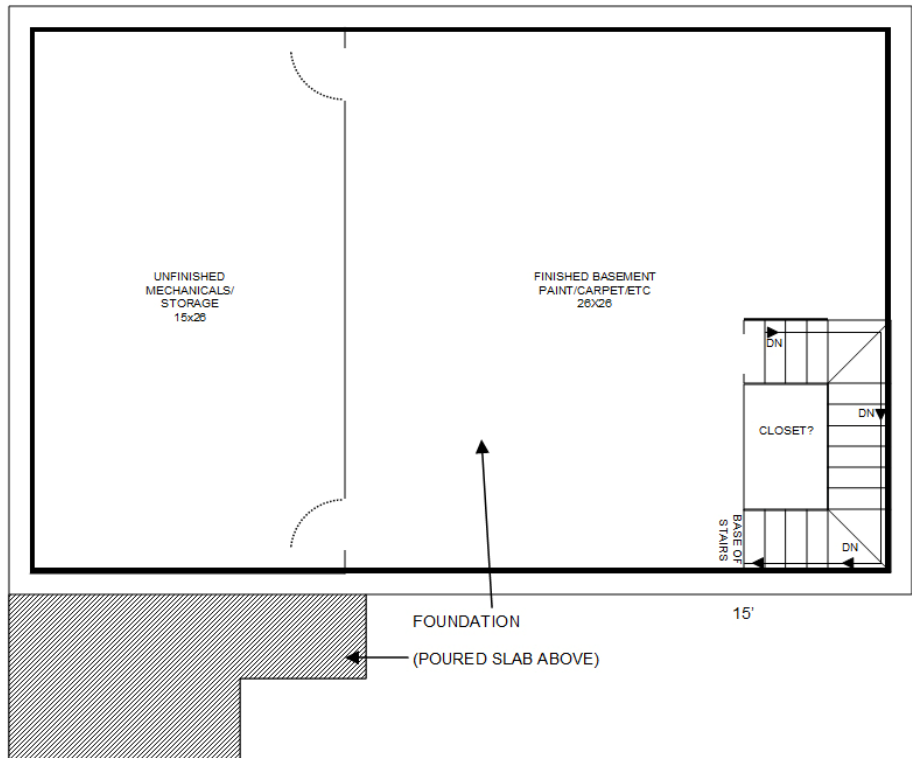
Second Floor

1138 interior finished sq ft



Basement

676 interior finished sq ft
390 interior unfinished sq ft



OPTION-7B

Front Elevation

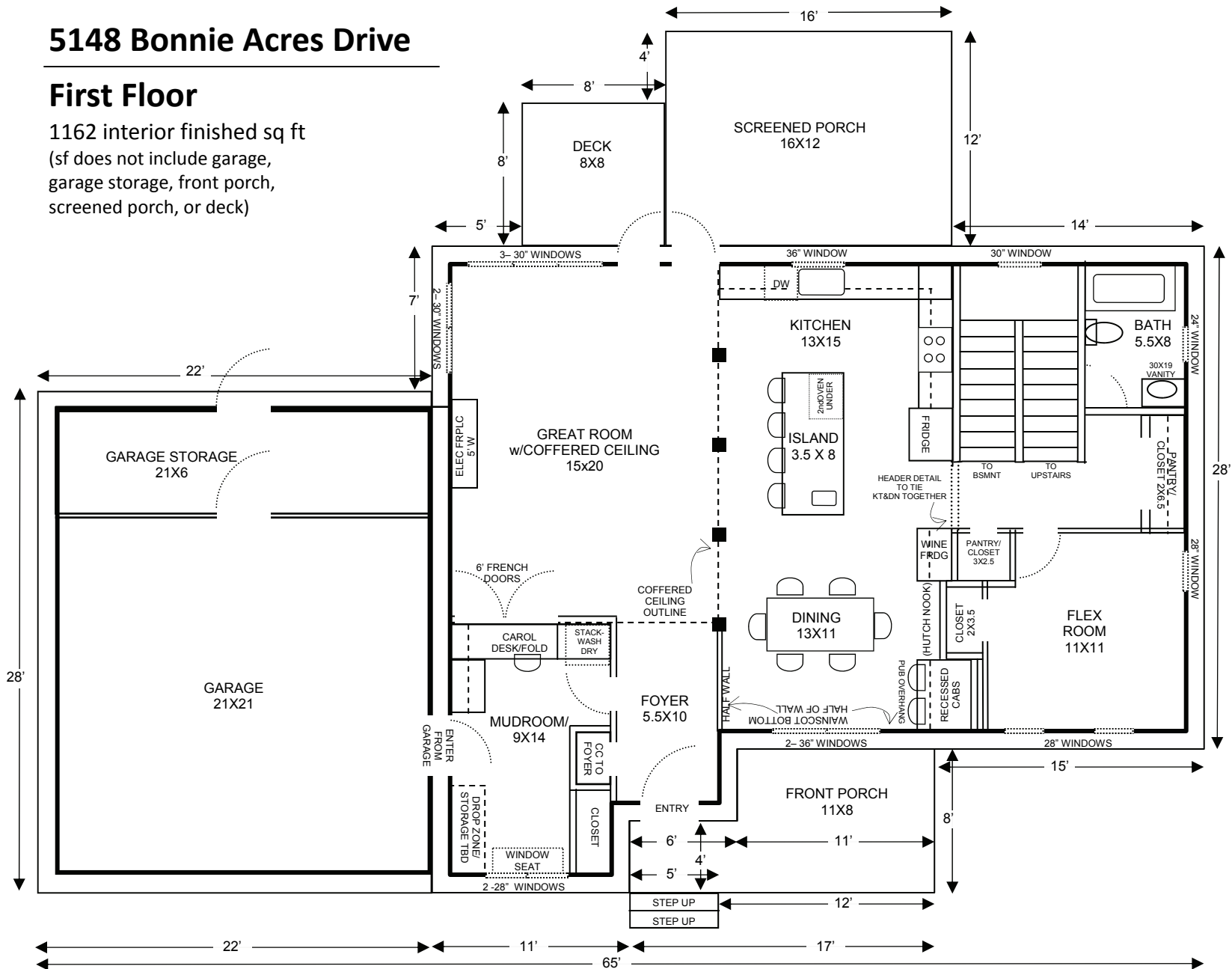
2324 interior finished sq ft above grade



5148 Bonnie Acres Drive

First Floor

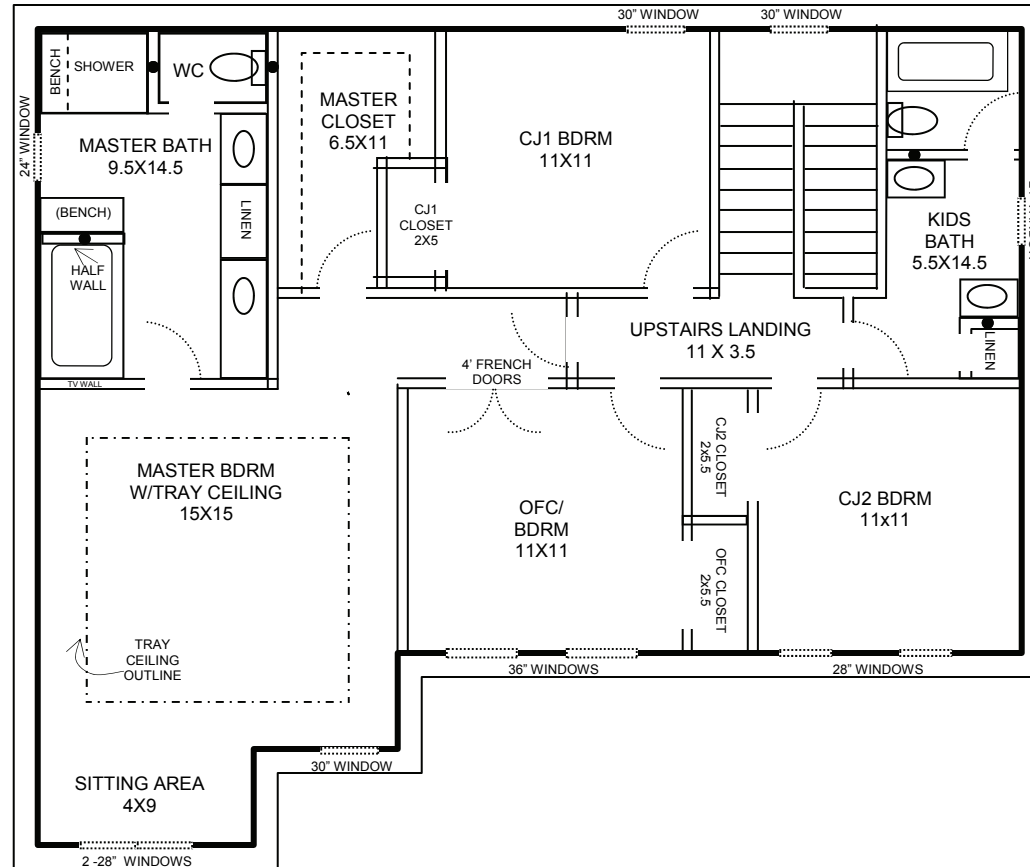
1162 interior finished sq ft
(sf does not include garage,
garage storage, front porch,
screened porch, or deck)



5148 Bonnie Acres Drive

Second Floor

1162 interior finished sq ft



5148 Bonnie Acres Drive

Basement

676 interior finished sq ft

390 interior unfinished sq ft

